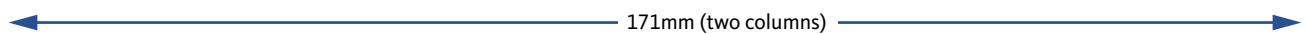
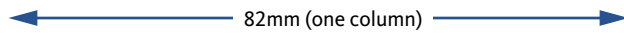


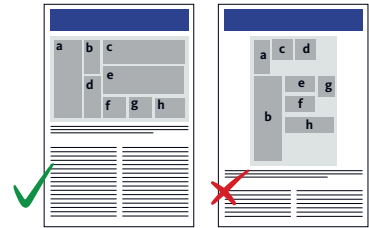
SIZE

- Submit figures and tables at the size intended for publication.
- Standard widths are 82 mm (one column) and 171 mm (two columns).
- Max. height is 220 mm.
- Figures can also be 1.5 columns wide where necessary (112 mm).



LAYOUT

- Keep white space to a minimum.
- Prepare in portrait rather than landscape format.
- Tables have a short title above. Footnotes are placed below and can be labelled ^a, ^b, ^c etc.



FONTS AND SYMBOLS

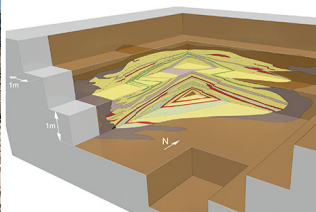
- Use the same sans-serif typeface throughout, preferably Helvetica or Arial*.
- Max. text size 9pt, min. text size 5pt in figures and 7pt in tables.
- If you are using special fonts like ESRI for map symbols, please submit these with the figures or convert to outline.
- Do not convert text to bitmap or outline. This will mean that the text is not editable.

If possible, please use OTF (Open Type Fonts, platform independent). Pro versions contain all the special characters required for most scientific articles.

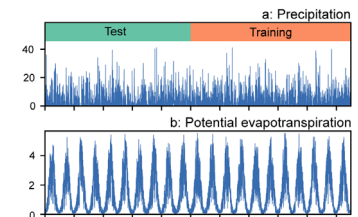
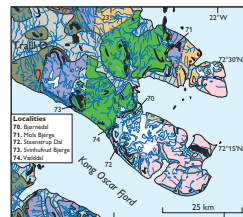
* For monographs and map descriptions use Keivit Pro typeface.



EXAMPLES: IMAGES



EXAMPLES: LINE ART



FILE TYPES: IMAGES (Bitmap)

Images include photographs, drawings (by hand), imaging system outputs and other graphical representations.

- If a figure includes both line art (including panel labels) and images, follow the line-art guidelines.

Preferred file formats: TIF, PNG, JPG.

FILE TYPES: ILINE ART (Vector)

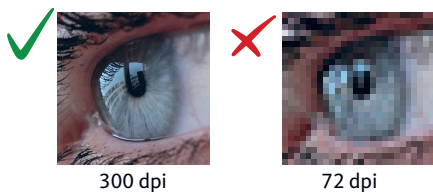
- Line art includes maps, graphs, flowcharts, diagrams, scatter plots and other text-based figures that are not tables.

Preferred file formats: EPS (vector), Ai and PDF (post script vector).

Convert other file formats to PDF or EPS for submission.

IMAGE RESOLUTION

The optimal resolution for images is 300 dpi (dots per inch) at actual size.



EXAMPLE: TABLE

Table 1 Pesticide status of groundwater

Sampling points	Sampling period	Detected ¹ (%)	Exceeded (%)
Monitoring wells	2016–2018	42	18
Waterworks wells	2014–2018 ²	29	7
Waterworks wells	2015–2019	24	7

¹ Detected refers to concentrations $\geq 0.01 \mu\text{g/l}$. ² This study.