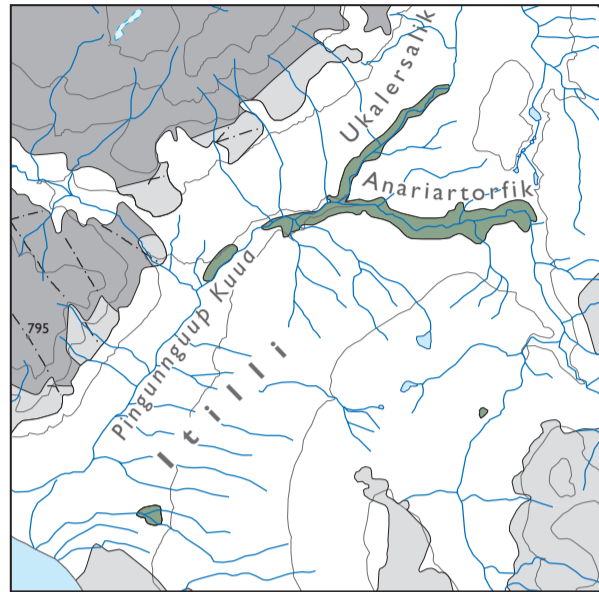
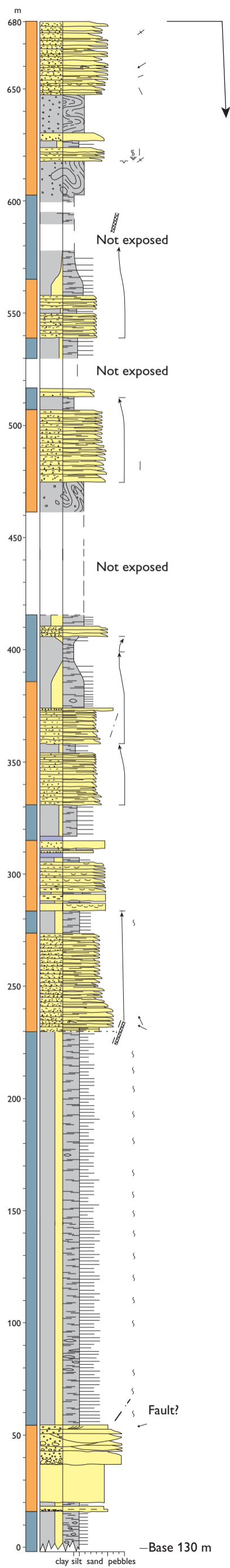


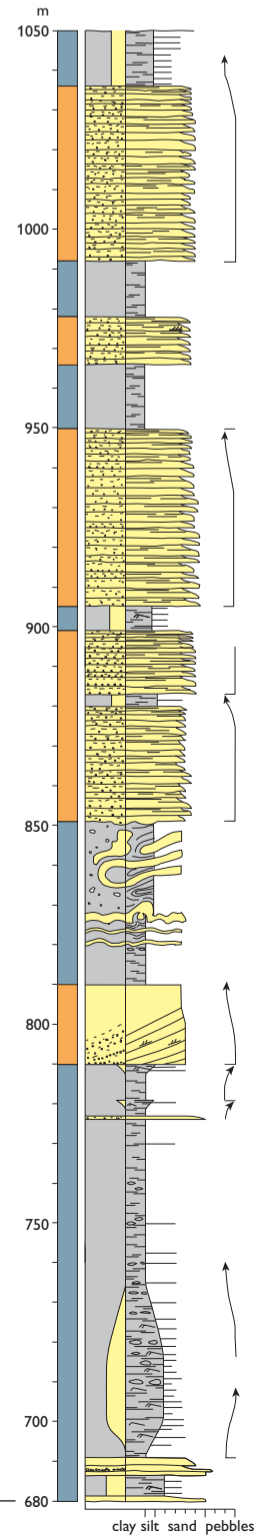
Plate 2

Measured section through the Itilli Formation in the southern part of the Itilli valley on western Nuussuaq. The lower levels of this composite section are observed along the Pingunnguup Kuua river; this section can be continued (above 680 m) along the Ukalersalik (A) or the Anariartorfik (B) tributaries. The inset map shows the location of the sections; for location, see Fig. 65; for legend, see Plate 1. Details of the section are shown in Figs 66, 68–70. The section is both the type section of the formation and the reference section of the Anariartorfik Member. The locality map is a segment of Fig. 65.

Pingunnguup Kuua



A Ukalersalik



Junction between
Ukalersalik and
Anariartorfik gorges

B Anariartorfik

